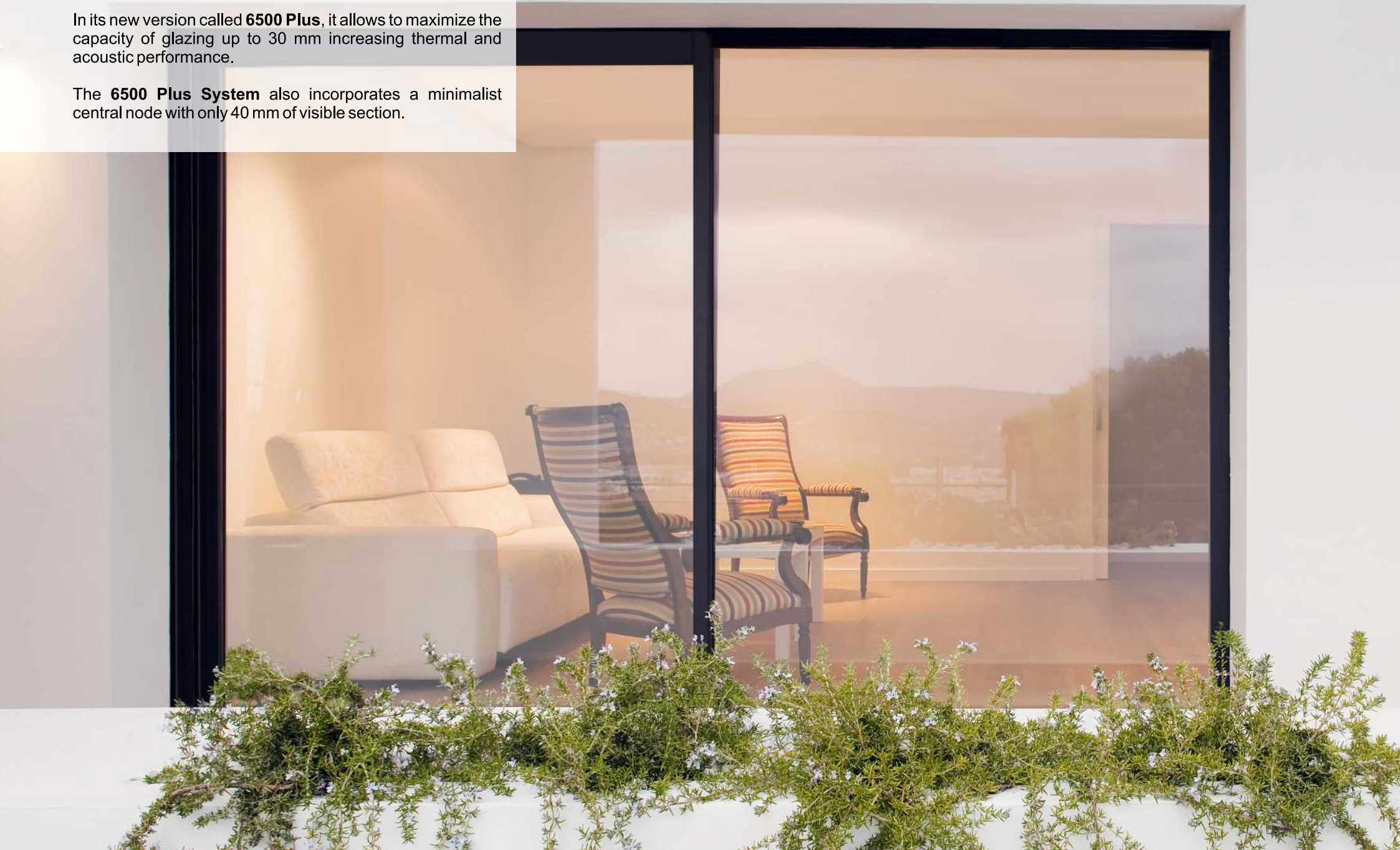


System 6500 Plus Sliding 6500 Plus Sliding

Window system and sliding doors with average thickness of 1.5 mm profiles.

In its new version called **6500 Plus**, it allows to maximize the capacity of glazing up to 30 mm increasing thermal and acoustic performance.

The **6500 Plus System** also incorporates a minimalist central node with only 40 mm of visible section.



System 6500 Plus Sliding / 6500 Sliding

Transmittance

6500 Plus Sliding

U_w from 2,0 (W/m²K)

Please consult typology, dimensions and glass

6500 Sliding

U_w from 2,2 (W/m²K)

Please consult typology, dimensions and glass

CTE- Apto para zonas climáticas*: α A B C D E

*En función de la transmitancia del vidrio

Acoustic insulation

6500 Plus Sliding

Maximum glazing: 30 mm

Maximum acoustic insulation: **Rw=36 dB**

6500 Sliding

Maximum glazing: 17 mm

Maximum acoustic insulation: **Rw=34 dB**

Categories achieved at test centre

Air permeability

(UNE-EN 12207:2000): Class 3

Water tightness

(UNE-EN 12208:2000): Class 7A

Wind resistance

(UNE-EN 12210:2000): Class C4

Reference test 1,48 x 1,30 m 2 sashes

Finishes

Possibility of dual colour

Colour powder coating (RAL, mottled and rough)

Wood effect powder coating

Anti-bacterial powder coating

Anodized



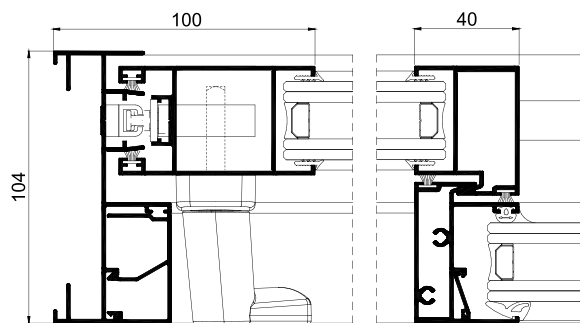
Sections

Frame 104 mm / 158 mm (Plus)
83 mm

Sash 41,6 mm (Plus)
32 mm

Profile thickness

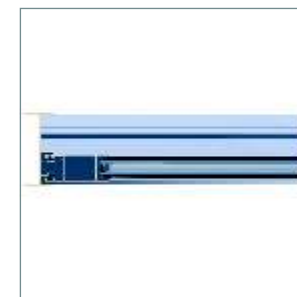
Window 1,5 mm
Door 1,5 mm



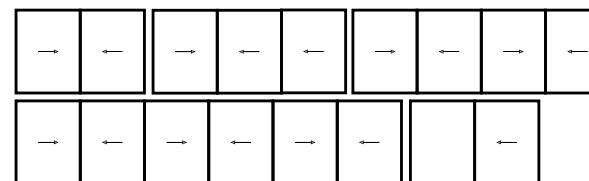
Version 6500 Plus Sliding



6500 Sliding version



Opening possibilities



Maximum dimensions/sash

Width (L) = 1.900 mm

Height (H) = 2.600 mm

Please consult regarding maximum weight and dimensions for other opening types.

6500 Plus Sliding

Slider of 2, 3, 4 y 6 sashes.

Monorail possibility (fixed + leaf)

Dualrail and 3 rails.

6500 Sliding

Slider of 2, 3, 4 y 6 sashes.

3 rails possibility.

Possibility monorail galandage.

Maximum weight/sash

240 Kg 6500 Plus Sliding

140 Kg 6500 Sliding